



Brother P-touch labels have been subjected to a series of rigorous tests which prove that even when they're exposed to extreme conditions our labels have been designed to last.



Laminated – our unique laminated tape technology ensures that a layer of super-clear polyethylene laminate protects your text.



Temperature Resistant – P-touch labels can withstand extreme temperatures, from -80°C to 150°C.



Strong Adhesion – specially developed adhesive means P-touch labels will stay firmly affixed to a wide range of surfaces.



Abrasion Resistant – In the P-touch abrasion test using a 1kg sanding device, lettering remained completely intact, only the protective layer was slightly scratched.



Chemical Resistant – after being submerged for 2 hours in a variety of chemical substances, no change in appearance or structure of P-touch labels occurred and the labels remained affixed.



Water Resistant – after submersion in water over a long period, the tape structure and adhesive strength of P-touch labels remained unchanged.



Fade Resistant – after a year in a simulated sunny climate P-touch labels showed very little change visible to the naked eye.

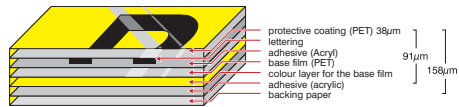


Easy Peel – enables convenient removal of the tape backing before applying the label.

Why do Brother P-touch labels last longer?

Unlike ordinary labels, Brother's patented laminated tape technology ensures that a layer of super clear polyethylene laminate protects your text. Our laminated tapes consist of six layers of materials, resulting in a thin, extremely strong label.

Characters formed with thermal transfer ink are actually printed on the underside of the laminate and sandwiched between layers of PET (polyester film). This lets you create characters that are virtually indestructible on labels that stand the test of time.



Brother Laminated Tape Construction

Tape Widths



Contact:



Brother International (Aust) Pty Ltd

Web-site: www.brother.com.au Technical Help Web-site: <http://solutions.brother.com>
NSW/ACT 7 Khartoum Rd. North Ryde NSW 2113 Phone: (02) 9887 4344 Fax: (02) 9870 7234
VIC 1/733 Whitehorse Rd. Mont Albert VIC 3127 Phone: (03) 9899 4844 Fax: (03) 9899 4833
QLD/NT 245 Riverside Drive. West End QLD 4101 Phone: (07) 3255 1211 Fax: (07) 3255 1911
SA/TAS Unit 4, 13 King William Rd. Unley SA 5061 Phone: (08) 8272 1300 Fax: (08) 8272 1199
WA 117 Great Eastern Highway. Belmont WA 6104 Phone: (08) 9478 1955 Fax: (08) 9277 2177

All specifications subject to change without notice

P-touch 1010

Labelling Machine with built-in date/time function

Brother P-touch 1010



EASY TO USE
HANDHELD DESIGN
LARGE LCD DISPLAY
DATE/TIME FEATURE



Always at your side

Technical Information

Hardware

Dimensions	107mm(W)x203mm(D)x57mm(H)
Design	Handheld
Weight	365g (without batteries & tape)
Colour	Metallic Silver, Royal Blue
Keyboard	ABC & Numbers
Number of Keys	51 keys
Cutter	Yes (manual cutter)
LCD	12 Char. x 1 line + Indicators
Power	6 x AAA (LR03) batteries
Optional	AC adapter (model AD-5000)
Built-in clock	Yes (for date/time function)
Tape Type	TZ tape cassette system
Tape sizes	3.5 / 6 / 9 / 12mm
Print Head	180dpi (64 dots)
Print Speed	10mm/second

Built-In Software

Memory	9 locations (maximum 80 characters each)
Built-in Languages	English / German / French / Dutch / Italian / Spanish / Portuguese / Danish / Swedish / Norwegian / Finnish / Polish / Slovakian / Slovenian / Croatian / Romanian / Hungarian / Czech
Auto Formats	Auto length / VHS / Mini DV / Audio Cassette / CD Case / File Tab / Divider Tab
Label Length	Auto / Manual (30mm – 300mm)
Number of CHRS	292
Number of Symbols	83
Max. Print Height	9mm
Font	Helsinki (sans serif)
Character Sizes	6, 9, 12, 18, 24 points
Multi-line printing	1 or 2 lines
Typestyles	Normal / Bold / Outline / Shadow / Italic / Italic & Bold / Italic & Outline / Italic & Shadow / Vertical
Number of Frames	5
Underline	Yes
Mirror Printing	Yes
Number of copies	1-9
Numbering	1-9
Auto power off	Yes
Function menu	Yes





P-touch 1010

The Brother P-touch 1010 is a simple to use, handheld labelling machine that prints durable, self-adhesive labels.

It has an attractive, ergonomic design and is ideal for around the home, office or school. This is the perfect entry level machine that anyone can use!

Overview

- Create durable, colour coded labels from 3.5mm up to 12mm in width, instantly
- Use the built-in clock to quickly add the current date/time to your label
- Modern design that's easy to hold
- Easy-to-read LCD display
- Cut your labels quickly using the built-in cutter
- Separate numeric keypad to speed-up number entry

Easy to use

The P-touch 1010 is suitable for a wide variety of labelling tasks. Just place the TZ label cassette of your choice (there are a wide variety of colours and widths to choose from), type your text onto the easy-to-read display and press the print button! It's so easy.

In seconds you will have a high quality label that can be used on a wide variety of surfaces and objects which will last for many years, even outdoors! To be even more creative, choose any of the 9 different tpestyles or add symbols!

Auto Time/Date

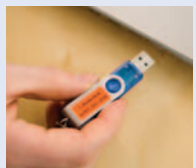
There is now an easy way to add the date and time onto a label. With just one press of the Time/Date key the current date, or date and time will be added to your label.

This feature is ideal for kitchens to show the date when food was stored in the fridge or freezer. It can also be used in laboratories to indicate the date and time that a sample was taken. Offices can quickly attach the date onto a file or folder, perfect for finance departments or people in the legal profession.

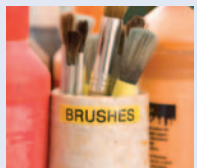
Home



Office



School



Features

- Large 9mm print height for easy-to-read labels
- 9 different tpestyles available to give your text a creative look
- 9 memory locations to store and recall your most frequently used labels
- Add one or more of the 83 Symbols to your labels
- Use one of the 5 available frame styles and give your labels more impact
- The text preview feature shows your label text on the LCD display before printing
- Optional AD-5000 adapter uses virtually no power when the P-touch 1010 is switched off

The TZ tape cassette system

TZ tape cassettes contain the label roll and ink, in an easy-to-load system.

The majority of P-touch tapes are laminated with a clear protective layer of plastic lamination, ensuring your label is one of the most durable available.

They will withstand sunlight, moisture, extremes of temperatures, chemicals and scratching.

There are other labels available, such as an iron-on fabric tape for clothes and a premium metallic silver tape.

Wide Range of Tapes

TZ tapes are available in a large range of colours and widths. Standard tape length is 8m providing approximately 100 labels (based on 10 characters and standard label length of 8cm). For full tape line up see TZ tape catalogue.



Within the TZ tape range we also offer special tapes, including:

Strong Adhesive Tape - Gives improved adhesion for those even more demanding applications and environments.

Tamper Evident Tape - Designed to leave a checkerboard pattern as an indicator that the tape has been removed.

Iron-On Fabric Tape - Produces washable cloth labels ideal for labelling uniforms, work wear, bedding and table cloths.

Flexi ID Tape - Ideal for cylindrical surfaces and flagging cables.

