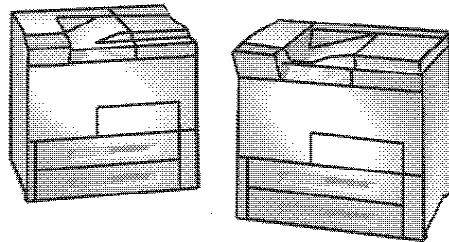


---

# The HP LaserJet 5Si MX and HP LaserJet 5Si printers.

## Technical Data

**HP Network Printers**  
Just what you had in mind.



**Easy for you to manage, easy for everyone to use.**

The HP LaserJet 5Si MX and 5Si printers are high-volume, 24-ppm machines designed to handle the printing needs of large networks and departments. Both printers provide HP JetAdmin software and new interfaces to make printing easier — both for you and your users.

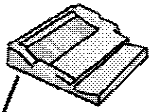
In designing the HP LaserJet 5Si and 5Si MX, Hewlett-Packard considered everything that was good about the award-winning HP LaserJet 4Si and 4Si MX network printers, and then found ways to improve them with new features and capabilities.

New HP LaserJet 5Si MX and 5Si printers take network printing to the next step. They provide better paper-handling features and options. They are faster. And

most of all, they deliver easier printing all around.

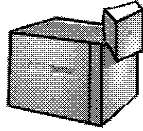
Easy-to-use software makes using and managing these printers a snap. If you've been devoting too much of your time to handling printer management problems, the HP LaserJet 5Si MX and 5Si printers will decrease the number of phone calls you get from users, and increase the amount of time you can devote to other network needs.

# The next generation of departmental printers.



## Duplex Unit

Saves money and paper by letting users print on both sides of a page. Handles all standard paper sizes, even up to 11 x 17/A3. Switching between one-sided and duplex printing is easy.



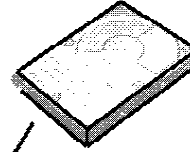
## 2,000-Sheet Input Tray

Provides a fourth input source and increases printer maximum capacity to 3,100 sheets. Automatic size sensing handles a variety of paper sizes.



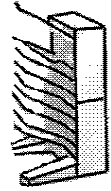
## Envelope Feeder

Lets users print up to 100 envelopes without reducing standard paper capacity.



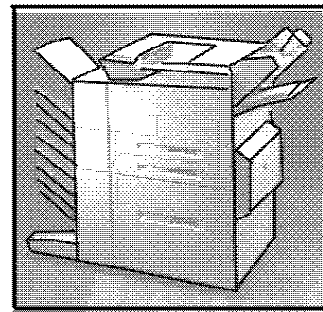
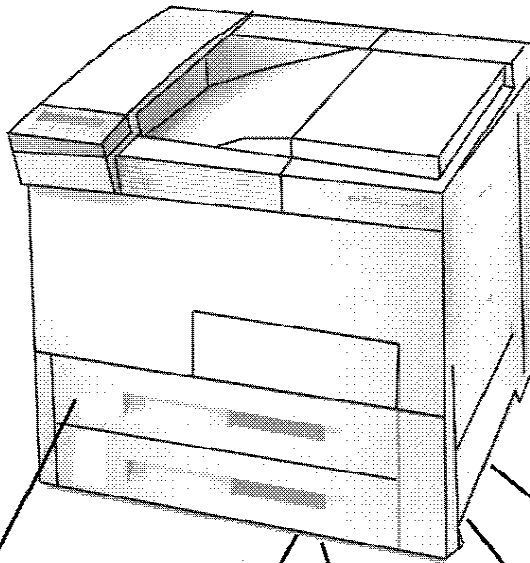
## 420-Mbyte Hard Drive

Provides nonvolatile storage for fonts, forms and macros. Decreases network traffic and the time required to process complex documents.



## Multi-Bin Mailbox

Makes retrieving printed documents easy in large departments and increases output capacity to 2,600 pages. Configurable for one of three output modes: mailbox, job separation or stacking.



## Fully loaded for the office

HP LaserJet 5Si MX and 5Si printer options provide advanced printing capabilities from a single, easily managed source.

Three standard input sources: Tray 1 is a 100-sheet multipurpose tray for flexible paper handling. Trays 2 and 3 are 500-sheet trays with automatic size sensing for supporting different paper sizes.

24-page-per-minute engine and 40-MHz RISC processor keep departments producing at maximum speeds.

HP LaserJet 5Si MX printer comes with HP JetDirect card, one MIO expansion slot and 12 Mbytes memory. HP LaserJet 5Si comes with two MIO expansion slots and 4 Mbytes memory. Both come with Memory Enhancement technology (MEt) and extra SIMM slots.

HP LaserJet 5Si MX comes with genuine Adobe™ PostScript™ Level 2 language and 80 fonts (35 Adobe Type 1, 35 Intellifont, 10 TrueType). HP LaserJet 5Si comes with 45 fonts (35 Intellifont, 10 TrueType). HP FontSmart software offers 65 more TrueType fonts for Windows.

Money-saving features: Powersave mode reduces power consumption; Economode saves toner by offering draft printing mode.

# Specifications

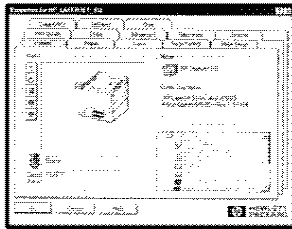
<b>Speed and Throughput</b>	<p>24-page-per-minute rated engine speed for letter- and A4-sized documents. AMD 29040 RISC processor. First page out in less than 16 seconds after receipt of data. Throughput is application- and system-dependent. Optimal speed achieved with the most current software application drivers. Warm-up time less than 60 seconds.</p> <table border="1"><thead><tr><th>Paper Size</th><th>Speed</th></tr></thead><tbody><tr><td>8.5 x 11 in/A4</td><td>24 ppm 9.5 ppm duplex</td></tr><tr><td>8.5 x 14 in/B4</td><td>15 ppm 7.5 ppm duplex</td></tr><tr><td>11 x 17 in/A3</td><td>13 ppm 6.5 ppm duplex</td></tr><tr><td>7.25 x 10.5 in</td><td>20 ppm 8.5 ppm duplex</td></tr></tbody></table>	Paper Size	Speed	8.5 x 11 in/A4	24 ppm 9.5 ppm duplex	8.5 x 14 in/B4	15 ppm 7.5 ppm duplex	11 x 17 in/A3	13 ppm 6.5 ppm duplex	7.25 x 10.5 in	20 ppm 8.5 ppm duplex
Paper Size	Speed										
8.5 x 11 in/A4	24 ppm 9.5 ppm duplex										
8.5 x 14 in/B4	15 ppm 7.5 ppm duplex										
11 x 17 in/A3	13 ppm 6.5 ppm duplex										
7.25 x 10.5 in	20 ppm 8.5 ppm duplex										
<b>Resolution</b>	600 x 600 dpi plus Resolution Enhancement technology (REt) and HP microfine toner. More than 120 levels of gray.										
<b>Typeface Capabilities</b>	35 Intellifont and 10 TrueType internal scalable typefaces. 35 Adobe Type 1 typefaces in HP LaserJet 5Si MX. HP FontSmart software provides font control and management, plus 65 additional TrueType fonts for Windows.										
<b>Memory</b>	12 Mbytes standard RAM for HP LaserJet 5Si MX printer. 4 Mbytes standard RAM for HP LaserJet 5Si printer. Optional HP SIMM DRAM memory modules in 2-Mbyte, 4-Mbyte, 8-Mbyte, 16-Mbyte and third-party 32-Mbyte sizes (in any combination). Maximum capacity including standard memory: 76 Mbytes (HP LaserJet 5Si MX printer) and 132 Mbytes (HP LaserJet 5Si printer). Memory Enhancement technology (MEt) expands the printer's ability to handle complex PCL documents. Available SIMM slots: 2 (HP LaserJet 5Si MX printer) and 4 (HP LaserJet 5Si printer).										
<b>Management</b>	<p>Enhanced HP JetAdmin printer management software is standard with both the HP LaserJet 5Si MX and 5Si printers. Provides remote printer control and status features for all HP JetDirect- and Novell NetWare file server-connected printers, including installation, configuration and diagnostics. Printer provides industry-standard printer MIB compliance for compatibility within network environments.</p> <p>New HP JetAdmin features provide end user print job tracking and monitoring with real-time status updates, alerts and job cancel. Versatile new Windows interface provides document customization such as watermarks, booklet printing and printing of multiple pages on one sheet of paper.</p>										
<b>Connectivity</b>	<p><b>HP LaserJet 5Si MX printer:</b> IEEE 1284 ECP parallel port, HP JetDirect print server card for Ethernet (10Base2 and 10Base-T) and LocalTalk (DIN-8) interfaces, and an additional HP MIO expansion slot. All interfaces are bi-directional and simultaneously active, switching automatically to the port receiving data. HP JetDirect print server cards also provide flash memory for future upgrades of network operating systems. Operating systems supported: Windows 3.1 and Windows 95, DOS, OS/2, Macintosh Systems 6 and 7, and UNIX.</p> <p>Standard network operating systems supported: Novell NetWare (IPX/SPX), Microsoft LAN Manager (LLC/DLC), IBM LAN Server (LLC/DLC), Microsoft Windows NT (LLC/DLC), Windows for Workgroups (LLC/DLC), HP-UX*, SunOS*, Solaris*, SCO UNIX**, IBM AIX** (TCP/IP), AppleTalk (EtherTalk) (DDP/ATP), AppleTalk (LocalTalk) (DDP/ATP).</p> <p><b>HP LaserJet 5Si printer:</b> IEEE 1284 ECP bi-directional parallel port and two HP MIO expansion slots (for HP JetDirect print server cards and third-party solutions). Support for all major network operating systems, I/O switching and automatic network protocol switching provided by optional HP JetDirect print server cards for Ethernet and LocalTalk or HP JetDirect print server card for Token Ring.</p> <p>* Software support is required. See back page for ordering information. ** Software is supported directly from SCO and IBM.</p>										
<b>Languages</b>	Enhanced PCL 5 (standard). Adobe PostScript Level 2 language SIMM standard with HP LaserJet 5Si MX printer and optional on HP LaserJet 5Si printer. Additional minimum 8 Mbytes RAM recommended for adding Adobe PostScript language to HP LaserJet 5Si printer. Automatic language switching analyzes each incoming file, determining the correct language for the file and printing it correctly.										
<b>Product Certification</b>	UL 1950 D3 listed; CSA 22.2 No. 950 D3 certified; FCC Class B (110V and UPS units) and Class A (220V units) certified. TÜV certified. Product CDRH certified Class 1 Laser Product (safe for office/EDP use). NOM Certification.										

# Specifications

<b>Paper Handling</b>	Three standard input sources with a combined capacity of 1,100 sheets: Tray 1: 100-sheet multipurpose tray for automatic and manual feeding, including envelopes, labels, transparencies and other special media. Trays 2 and 3: 500-sheet input trays supporting paper sizes up to 11 x 17/A3. Standard output capacity of 600 sheets (500 sheets face-down and 100 sheets face-up). Standard input sources and optional 2,000-Sheet Input Tray support multiple paper sizes with automatic size sensing. Optional 2,000-Sheet Input Tray. Optional Envelope Feeder (capacity 100). Optional Duplex Unit. Optional Multi-Bin Mailbox.
<b>Paper</b>	Copier, bond, special application, recycled paper; 16 lb bond-110 lb index (60 to 200 g/m <sup>2</sup> ). Overhead transparencies designed for laser printers. Labels designed for laser printers. Envelopes 20-24 lb (75 to 90 g/m <sup>2</sup> ). Duplex 16-28 lb (60 to 105 g/m <sup>2</sup> ).
<b>Paper Sizes</b>	Minimum: 3.9 x 7.5 in; 98 x 191 mm (Tray 1 only). Postcard: 5.8 x 7.8 in; 147 x 198 mm (Tray 1; optional Envelope Feeder). A4: 8.3 x 11.7 in; 210 x 297 mm (Tray 1, 2 or 3; optional Duplex Unit or 2,000-Sheet Input Tray). Letter: 8.5 x 11 in; 216 x 279 mm (Tray 1, 2 or 3; optional Duplex Unit or 2,000-Sheet Input Tray). Legal: 8.5 x 14 in; 216 x 356 mm (Tray 1, 2 or 3; optional Duplex Unit or 2,000-Sheet Input Tray). Executive: 7.25 x 10.5 in; 184 x 267 mm (Tray 1; optional Duplex Unit). JIS B4: 10.1 x 14.3 in; 257 x 364 mm (Tray 1, 2 or 3; optional Duplex Unit or 2,000-Sheet Input Tray). JIS B5: 7.2 x 10.2 in; 182 x 257 mm (Tray 1 only). 11 x 17: 11.0 x 17.0 in; 279 x 432 mm (Tray 1 or 3; optional Duplex Unit or 2,000-Sheet Input Tray). A3: 11.7 x 16.5 in; 297 x 420 mm (Tray 1 or 3; optional Duplex Unit or 2,000-Sheet Input Tray). Maximum: 11.7 x 17.7 in; 297 x 450 mm (Tray 1 only).
<b>Envelope Sizes</b>	#10 regular: 4.1 x 9.5 in; 105 x 241 mm (Tray 1; optional Envelope Feeder). Monarch: 3.9 x 7.5 in; 98 x 191 mm (Tray 1; optional Envelope Feeder). DL: 4.3 x 8.7 in; 110 x 220 mm (Tray 1; optional Envelope Feeder). B5: 6.9 x 9.8 in; 177 x 250 mm (Tray 1; optional Envelope Feeder). C5: 6.4 x 9.0 in; 162 x 229 mm (Tray 1; optional Envelope Feeder).
<b>Print Orientation</b>	Portrait and landscape.
<b>Control Panel</b>	Buttons: online, menus, items, +, select. Indicators: online, data, attention. Control panel can be locked through software. Messages can be displayed in 14 languages: Danish, Dutch, English, Finnish, French, German, Italian, Japanese (Katakana), Norwegian, Polish, Portuguese, Spanish, Swedish, Turkish.
<b>Environmental Ranges</b>	Temperature for printer and toner: Operating: 10° to 32.5° C (50° to 90° F). Storage: 0° to 40° C (32° to 105° F). Humidity: Operating: 20% to 80% RH. Storage: 15% to 90% RH. Acoustics (declared noise emissions in accordance with ISO 9296): Operator position — $L_{PAM}$ 57 dB(A) printing, $L_{PAM}$ 42 dB(A) standby. Bystander — $L_{PAM}$ 50 dB(A) printing, $L_{PAM}$ 38 dB(A) standby. Sound Power — $L_{WAD}$ 6.6 bels (A) printing, $L_{WAD}$ 5.5 bels (A) standby, $L_{WAD}$ 0 bels (A) powersave mode.
<b>Power Requirements</b>	Source: 100 to 120 volts (+/- 10%) or 200 to 240 volts (+/- 10%). Printer's voltage range depends on the country in which the printer is purchased. Frequency: 50/60 Hz 110V (+/- 2 Hz). 50 Hz 220V (+/- 2 Hz). Power consumption at 120V ac: Printing: 515 watts. Standby: 125 watts. Powersave: 35 watts or less. Minimum circuit capacity for typical product: 13.5 amps. Power consumption at 220V ac: Printing: 515 watts. Standby: 125 watts. Powersave: 35 watts or less. Minimum circuit capacity for typical product: 6.0 amps.
<b>Dimensions</b>	Width: 21.3 in; 540 mm. Height: 21.3 in; 540 mm. Depth: 20.5 in; 520 mm. Weight (without toner cartridge or options): 99 lb; 45 kg.
<b>Warranty</b>	One-year warranty; on-site in U.S. and selected locations.
<b>Duty Cycle</b>	100,000 pages per month.
<b>Printer Maintenance Kit</b>	For optimum performance, HP LaserJet 5Si MX and 5Si printers require user maintenance every 350,000 pages. Note that the maintenance kit is not covered under warranty or service contracts.

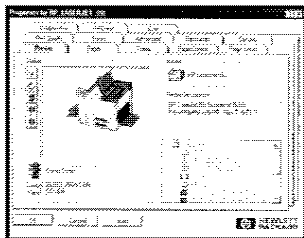
# Intelligently simple network printing.

## Departmental printers have never been easier to manage.



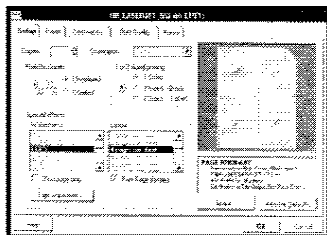
- Standard HP JetAdmin software with improved interfaces makes overseeing HP LaserJet 5Si MX and 5Si printers easy, providing remote installation, configuration and management.
- Automatic Windows® driver installation, configuration and distribution reduce lengthy chores to a few minutes.
- HP LaserJet 5Si MX printer and HP JetDirect print servers are industry-standard printer MIB compliant for compatibility within network environments — the first printer available to provide this.
- Add other HP JetDirect print servers or third-party cards to HP LaserJet 5Si MX and 5Si printers to provide support for multiple network connectivity. HP JetDirect print servers support all major network operating systems with automatic protocol switching.

## Superior visibility and control.



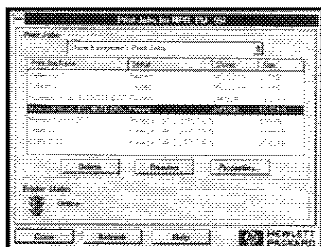
- Real-time remote printer status and diagnostics alert network managers instantly to potential problems.
- Software support for HP LaserJet 5Si MX and 5Si printer paper-handling accessories makes configuration and use a snap. Optional accessories include: 2,000-Sheet Input Tray (provides a fourth input source and increases input capacity to 3,100 sheets), Multi-Bin Mailbox (provides easy document retrieval for large departments) and Duplex Unit (offers two-sided printing on paper sizes up to 11 x 17/A3).
- HP FontSmart software simplifies font management and provides 65 additional TrueType fonts for Windows.

## Easy access to advanced features.



- HP LaserJet 5Si and 5Si MX printers offer new software to provide quick access to a range of printer features.
- Easy access and visual prompts let users perform complex printing tasks, such as media selection or duplex (two-sided) printing, without help from network managers.
- HP's new Windows printer driver offers special features like background watermarks (such as "draft copy" or "confidential"), booklet printing and printing of multiple pages on one sheet of paper.

## Users oversee the whole process, from beginning to end.



- HP JetAdmin software simplifies printing to a "drag-and-drop" or "point-and-click" process in Microsoft® Windows 95.
- Bi-directional real-time printer status lets users know which printers and what features are available for use right now. A stoplight icon alerts them to potential printing bottlenecks, such as "paper out" or "toner low."
- HP JetAdmin software provides real-time remote job status. Users know where their documents are during the whole printing process: the job's position in the queue while waiting to print, the portion of the job completed while printing, and where the job is located when finished. They can pause or delete jobs any time in the process.

## Ordering information

Number	Description
<b>Standard Unit</b>	
C3167A	<b>HP LaserJet 5Si MX printer.</b> Includes 12 Mbytes RAM, one IEEE 1284 ECP bi-directional parallel port, HP JetDirect Ethernet/LocalTalk interface card, one HP MIO expansion slot, enhanced HP PCL 5, Adobe PostScript Level 2 language, one HP microfine toner cartridge, one 100-sheet multipurpose tray, two 500-sheet paper trays with automatic size sensing, printer software, power cord and documentation. Printer interface cables not included.
C3166A	<b>HP LaserJet 5Si printer.</b> Includes 4 Mbytes RAM, one IEEE 1284 ECP bi-directional parallel port, two HP MIO expansion slots, enhanced HP PCL 5, one HP microfine toner cartridge, one 100-sheet multipurpose tray, two 500-sheet paper trays with automatic size sensing, printer software, power cord and documentation. Printer interface cables not included.
<b>Supplies and Accessories</b>	
C2975A	<b>Printer Cabinet.</b>
C3762A	<b>Duplex Unit.</b> Supports up to 11 x 17-size paper. Fits within the printer. 100,000-page-per-month duty cycle. No power required. Memory upgrade recommended for duplex printing of 11 x 17 pages. Customer installable.
C3763A	<b>2,000-Sheet Input Tray.</b> For letter, legal, A4, A3, B4 and 11 x 17 sizes with automatic size sensing. Serves as a printer stand. 100,000-page-per-month duty cycle. Includes paper-handling controller to be installed on the printer formatter, communication cable and power cord. Customer installable.
C3765A	<b>Envelope Feeder.</b> Holds up to 100 envelopes of #10 regular, DL, B5, C5 and Monarch sizes. Prints 17 envelopes per minute. No power required. Customer installable.
C3764A	<b>Multi-Bin Mailbox.</b> Eight 250-sheet face-down bins support up to 28-lb paper; one 100-sheet face-up bin supports envelopes and up to 110-lb paper. Requires 2,000-Sheet Input Tray or Printer Cabinet. 100,000-page-per-month duty cycle. Includes communication cable and power cord. Customer installable.
C3768A	<b>Paper-handling controller board.</b> Necessary for using the Multi-Bin Mailbox without the 2,000-Sheet Input Tray.
C3909A	<b>Replacement toner cartridge.</b> Prints an average of 15,000 pages.
C3971A	<b>110V maintenance kit.</b>
C3972A	<b>220V maintenance kit.</b>
<b>Memory</b>	
C3131A	2-Mbyte SIMM
C3132A	4-Mbyte SIMM
C3133A	8-Mbyte SIMM
C3146A	16-Mbyte SIMM
C2965A	420-Mbyte disk drive
<b>Optional Language</b>	
C3169A	Adobe PostScript Level 2 SIMM
<b>HP JetDirect Print Servers</b>	
J2550A	HP JetDirect print server card for Ethernet (10Base-T)
J2552A	HP JetDirect print server card for Ethernet/LocalTalk
J2555A	HP JetDirect print server card for Token Ring
J2374C	HP JetAdmin Utility for HP-UX
J2375C	HP JetAdmin Utility for SunOS/Solaris
<b>Cables</b>	
C2950A	HP-recommended parallel cable (6.4 ft/2 m)
C2951A	HP-recommended parallel cable (10 ft/3 m)
<b>Documentation</b>	
C3166-90901	HP LaserJet 5Si and 5Si MX Printers User's Manual
C3166-90912	HP LaserJet 5Si and 5Si MX Printers Getting Started Guide
J2552-90051	HP JetDirect Print Server Software Installation Guide

If you have questions about HP LaserJet printers, there are a number of places you can turn for answers:

The HP Customer Support Center for fast assistance by telephone: (208) 323-2551\*.

HP Automated Support Access Program (HP ASAP) for recorded messages and fax support for hardware and software information to provide you answers 24 hours a day, 7 days a week: 1-800-333-1917\*.

HP Driver and Software Distribution to provide optional software solutions and printer drivers for popular software applications: (970) 339-7009\*.

The HP Peripherals Forum on CompuServe ("GO HP") to provide on-line responses to your technical questions, announcements of new products and the opportunity to download new printer drivers: CompuServe 1-800-524-3388\* for membership information (ask for Representative 51).

AppleLink's HP folder.

\*These services are based in the United States. Outside the U.S., call your HP regional office for information on country-specific support.

**Hewlett-Packard peripherals and personal computers are available at authorized HP resellers worldwide. In North America, call for the authorized HP reseller nearest you:**

**United States:** 1-800-LASERJET (1-800-527-3753)

**Canada:** 1-800-387-3867

**HP supplies and accessories are available at authorized HP resellers and many local computer or office supply stores. Check the Yellow Pages under "Computer Supplies" or "Office Supplies," or see your local authorized HP reseller.**

**For information outside North America, call the local HP sales office listed in your telephone directory, or refer to the list of HP regional offices below:**

**Asia Pacific:** (852) 848 7777

**Australia/New Zealand:** (61-3) 272 2895

**Europe/Africa/Middle East:** (41) 22 780 8111

**Japan:** (03) 3331 6111

**Latin America:** (305) 267-4220 (Miami)  
(525) 326-4044 (Mexico City)

**Information about HP products is also available through Access HP, Hewlett-Packard's home page on the World Wide Web.**

**URL:** <http://www.hp.com>

**Adobe and PostScript are trademarks of Adobe Systems, which may be registered in certain jurisdictions. TrueType is a U.S. trademark of Apple Computer, Inc. Windows and Microsoft are U.S. registered trademarks of Microsoft Corp. UNIX is a registered trademark in the United States and other countries, licensed exclusively through X/Open Company Limited. CompuServe is a U.S. trademark of CompuServe, Inc. All other brand and product names are trademarks of their respective companies.**

**The information in this document is subject to change without notice.**

**The Energy Star™ emblem does not represent EPA endorsement of any product or service.**

