

**lenovo**<sup>TM</sup>

## Lenovo 3000 series

V100/ N100/ C100 Notebooks and J100 Desktop

**New World. New Thinking.**<sup>TM</sup>



**Lenovo 3000 series V100 Notebook**

**NEW**

Ultraportable • Exceptional Features



**Purchasing world-class technology at an affordable price.  
Why do you still need to give way to limited budget?**



V100

## **V100 Notebook**

Ultraportable • Exceptional Features



N100

## **N100 Notebook**

Stylish • Multimedia



C100



## C100 Notebook

Affordability • Essential Features

J100



## J100 Desktop

Reliability • Quality

## Lenovo 3000 series

Giving you unlimited imagination and new multimedia entertainment by our ThinkPad creator!





Lenovo recommends Windows® XP Professional.



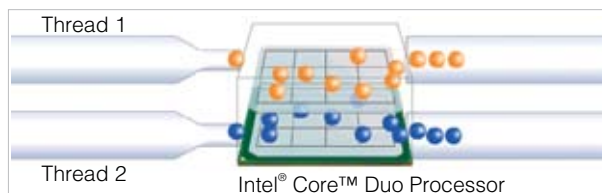
# Lenovo 3000 V100 Notebook

## Ultraportable • Exceptional Features



### Core™ Duo Processor: multitasking at ease

Lenovo 3000 V100 Notebook is equipped with Intel® Core™ Duo Processor to meet the needs for multitasking. Unlike the previous single core design, Core™ Duo Processor doubles the processing speed and allows multiple threads to be processed simultaneously, raising daily computer work capabilities. While processing document or compiling charts, the anti-virus software still smoothly performs its tasks at the back, which further enhances data security and improves work efficiency.



### Intel® Core™ Duo Processor?

Intel® Core™ Duo Processor contains two cores in one processor to execute and process threads simultaneously, hence doubling the speed of daily computer tasks. While saving battery consumption, the overall computer performance could be greatly enhanced as well. Processing multiple threads simultaneously is no longer a problem.



### 12.1" widescreen and built-in camera: expanded functionality

The 12.1" widescreen TFT monitor with 1,280 x 800 resolution provides vibrant images when watching DVD and other multimedia files. This maximizes visual effect when opening documents with complex items or when running multiple application programs.

In the meantime, the built-in 1.3-megapixel camera of Lenovo 3000 V100 adds convenience to activities such as videoconference or online chat.



### Integrated fingerprint reader: simple verification at fingertips

With a swipe of the finger at the integrated fingerprint reader located at the bottom of the keyboard and undergo simple verification, password authentication when logging into Windows®, screensaver setting and password-protected websites become worry-free. With the pre-installed OmniPass software, password management is made convenient and robust.



### DVD player & wireless network: easy data reception and transfer

The 5-in-1 Multicard Reader and DVD Dual Layer Multi-Burner etc. not only heighten the functionality of the notebook itself, but also add convenience during data transfer. IEEE 802.11a/b/g wireless network greatly extends its compatibility. The Wireless LAN ON/OFF switch on the side of the notebook makes network connection and battery life management under control and with efficiency.



### instant on: entertainment under power off mode

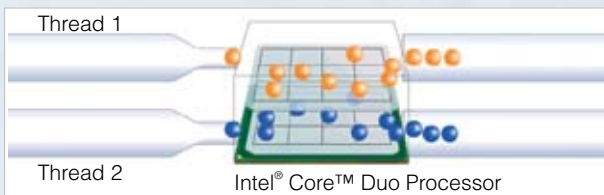
By pressing the instant on button beside the Lenovo Care button located at the top of the keyboard, you can gain access to Roxio DigitalMedia LE software for multimedia entertainment such as burning discs or playing DVD etc., as if you are under Windows® XP system. Besides, no matter Windows® XP is under hibernate mode or power off mode, "InterVideo instant on" application software can still open multimedia files like music or video files saved into the discs or hard disks, further improving convenience.

## Lenovo 3000 V100 Notebook

Model	Processor	Operating System	Chipset	Memory	Hard Disk	Optical Drive	LCD	Display Adapter	Integrated Communications	Wireless Connection	Built-in Camera	Bluetooth	Integrated Fingerprint Reader
076362H/C2B	1.66GHz, 677 MHz 2MB L2 Cache	Windows XP Home (Chinese/ English version)	Intel® Core™ Duo Processor T2300e	512MB DDR2 (667MHz)	80GB 5400rpm	Multi-Burner	12" WXGA	Intel GMA950 128MB shared	10/100 ethernet & 56K modem	Intel 802.11 a/b/g	Y	Y	Y
0763E8H/C4B	1.66GHz, 677 MHz 2MB L2 Cache	Windows XP Professional (Chinese/ English version)	Intel® Core™ Duo Processor T2300e	512MB DDR2 (667MHz)	80GB 5400rpm	Multi-Burner	12" WXGA	Intel GMA950 128MB shared	10/100 ethernet & 56K modem	Intel 802.11 a/b/g	Y	Y	Y
076368H/A2B	2.0 GHz, 677 MHz 2MB L2 Cache	Windows XP Home (Chinese/ English version)	Intel® Core™ Duo Processor T2500	512MB DDR2 (667MHz)	100GB 5400rpm	Multi-Burner	12" WXGA	Intel GMA950 128MB shared	10/100 ethernet & 56K modem	Intel 802.11 a/b/g	Y	Y	Y

# Lenovo 3000 N100 Notebook

## Stylish • Multimedia



### Intel® Core™ Duo Processor?

Intel® Core™ Duo Processor contains two cores in one processor to execute and process threads simultaneously, hence doubling the speed of daily computer tasks. While saving battery consumption, the overall computer performance could be greatly enhanced as well. Processing multiple threads simultaneously is no longer a problem.



### Core™ Duo Processor: multitasking at ease

Lenovo 3000 N100 Notebook is equipped with Intel® Core™ Duo Processor to meet the needs for multitasking. Unlike the previous single core design, Core™ Duo Processor doubles the processing speed and allows multiple threads to be processed simultaneously, raising daily computer work capabilities. While processing document or compiling charts, the anti-virus software still smoothly performs its tasks at the back, which further enhances data security and improves work efficiency.



### 14.1" and 15.4" Ultra Clear monitor

With 14.1" (1280 x 800 resolution) or 15.4" (1680 x 1050 resolution) ultra clear widescreen display, images are more vibrant when viewing DVD or multimedia files. This maximizes visual effect when opening documents with complex items or when running multiple application programs. In the meantime, the built-in 1.3-megapixel camera of Lenovo 3000 N100 adds convenience to activities such as videoconference or online chat.



### Integrated Fingerprint Reader: simple verification at fingertips

With a swipe of the finger at the Integrated Fingerprint Reader located at the bottom of the keyboard and undergo simple verification, password authentication when logging into Windows®, screensaver setting and password-protected websites become worry-free. With the pre-installed OmniPass software, password management is made convenient and robust.



### The best keyboard and magnifying expanded functions

Lenovo continuously strives for new product development. Understanding that users get tired easily by using the computers for long hours, Lenovo 3000 N100 adopts ThinkPad technology keyboard to magnify typing comfort.

Lenovo also strives for innovation in expanding its functionality: 4-in-1 Multicard Reader, PC card, IEEE 1394 (4 Pin) and 4-port USB 2.0 makes N100 comparable to desktop computers.



### ON/OFF switch: more efficient wireless network

Lenovo 3000 N100 is integrated with IEEE 802.11a/b/g wireless technology, providing an easy solution to users for network connection at office or at home. The wireless network ON/OFF switch located at the side of the notebook makes network connection and battery life management under control and with efficiency.

### Lenovo 3000 N100 Notebook

Model	Processor	Operating System	Chipset	Memory	Hard Disk	Optical Drive	LCD	Display Adapter	Integrated Communications	Wireless Connection	Built-in Camera	Bluetooth	Integrated Fingerprint Reader
06895NH/5CB	1.83GHz, 677 MHz 2MB L2 Cache	Windows XP Home (Chinese/ English version)	Intel® Core™ Duo Processor T2400	512MB DDR2 (667MHz)	100GB 5400rpm	Multi-Burner	14"WXGA	Intel GMA950 128MB shared	10/100 ethernet & 56K modem	Intel 802.11 a/b/g	Y	Y	Y
06896UH/6NB	1.66GHz, 677 MHz 2MB L2 Cache	Windows XP Home (Chinese/ English version)	Intel® Core™ Duo Processor T2300e	512MB DDR2 (667MHz)	80GB 5400rpm	Multi-Burner	14"WXGA	Intel GMA950 128MB shared	10/100 ethernet & 56K modem	Intel 802.11 a/b/g	Y	Y	Y
06896VH/6WB	1.66GHz, 677 MHz 2MB L2 Cache	Window XP Professional (Chinese/ English version)	Intel® Core™ Duo Processor T2300e	512MB DDR2 (667MHz)	80GB 5400rpm	Multi-Burner	14"WXGA	Intel GMA950 128MB shared	10/100 ethernet & 56K modem	Intel 802.11 a/b/g	Y	Y	Y
07685QH/5CB	1.83GHz, 677 MHz 2MB L2 Cache	Windows XP Home (Chinese/ English version)	Intel® Core™ Duo Processor T2400	512MB DDR2 (667MHz)	100GB 5400rpm	Multi-Burner	15" WSXGA+	nVidia G72MV 128MB	10/100 ethernet & 56K modem	Intel 802.11 a/b/g	Y	Y	Y

Lenovo recommends Windows® XP Professional.



Lenovo recommends Windows® XP Professional.





# Lenovo 3000 C100 Notebook

## Affordability • Essential Features



### Improved keyboard design

Lenovo strives for continuous new product development, and understands that keyboard is the most frequently touched computer component by the users. Therefore, Lenovo 3000 series C100 Notebook is fit out with ThinkPad technology keyboard, allowing users to type comfortably.



### Integrated with essential USB expanding functionality

By connecting Lenovo USB Port Replicator (optional accessory) to Lenovo 3000 C100 Notebook, you can enjoy the expanded functions such as the extra USB port, serial, audio, ethernet, VGA in one easy motion. According to different CPU, Lenovo USB Port Replicator can even provide the maximum 1280 x 1024 (16 bit color) multi-monitor work platform.



### Security features making users rest assured

Troubled by numerous passwords for websites and application programs? The pre-installed "Password Manager" software can unify login and verification procedures into one, protecting the confidentiality of password information. The integrated security system "Norton Internet Security 2005" further counters against the threats of virus, spying software and junk mails, etc.



### "One-touch" wireless network ON/OFF switch

Lenovo 3000 C100 is integrated with IEEE 802.11a/b/g wireless technology, further enhancing its compatibility. The wireless network ON/OFF switch located at the side of the notebook makes network connection and battery life management under control and with efficiency.

### Lenovo 3000 C100 Notebook

Model	Processor	Operating System	Chipset	Memory	Hard Disk	Optical Drive	LCD	Display Adapter	Integrated Communications	Wireless Connection	Built-in Camera	Bluetooth	Integrated Fingerprint Reader
07612FH/B7B	Cel M1.5GHz 400MHz FSB 1MB L2 Cache	Windows XP Home (Chinese/ English version)	Intel 370	256MB DDR2 (533MHz)	60GB (5400 rpm)	DVD/CDRW Rom	15" XGA	Intel GMA900 128MB shared	10/100 ethernet & 56K modem	Lenovo 802.11 a/b/g	No	No	No
07612KH/B8B	Cel M1.6GHz 400MHz FSB 1MB L2 Cache	Window XP Home (Chinese/ English version)	Intel 380	512MB DDR2 (533MHz)	80GB (5400 rpm)	Multi-Burner	15" XGA	Intel GMA900 128MB shared	10/100 ethernet & 56K modem	Lenovo 802.11 a/b/g	No	No	No
0761EBH/EMB	Intel Pentium M Processor 1.6 GHz 533MHz FSB 2MB L2 Cache	Window XP Professional (Chinese/ English version)	Intel 730	512MB DDR2 (533MHz)	60GB (5400 rpm)	DVD/CDRW Rom	15" XGA	Intel GMA900 128MB shared	10/100 ethernet & 56K modem	Intel 802.11 a/b/g	No	No	No

# Lenovo 3000 J100 Desktop

## Reliability • Quality



### DVD Dual Layer Multi-Burner

Lenovo 3000 J100 Desktop is equipped with DVD Dual Layer Multi-Burner, and is pre-installed with Roxio DigitalMedia LE for large volume of data and MP3 production, as well as InterVideo WinDVD player for audio-visual entertainment, combining both business and entertainment into one.



### Improved expanding functions and enriched accessories

The 2-port USB 2.0 connection port, earphone/microphone socket and optical drive at the front of the computer allows ease of use with earphones, USB storage device and digital cameras, etc. There are 4-port USB2.0 port, serial, parallel, ethernet, modem, mouse, keyboard, screen connection port, etc. at the back of the computer. Besides, 1 AGP and 3 PCI slots are also integrated into the machine for best preparation of expanded functionality.



### Security features making users rest assured

Troubled by numerous passwords for websites and application programs? The pre-installed "Password Manager" software in Lenovo 3000 J100 can unify login and verification procedures into one, protecting the confidentiality of password information. The integrated security system "Norton Internet Security 2005" further counters against the threats of virus, spying software, junk mails, etc.



### Free combination with value-added TFT-LCD monitor models

Apart from superb functionality in a small form factor desktop, Lenovo 3000 J100 desktop is complement to 15" or 17" TFT-LCD monitor. Besides bringing economic benefits, it is also an ideal choice of entry-level desktop for enterprise and home users.

### Lenovo 3000 J100 Desktop

Model	Processor	Operating System	Chipset	Memory	Hard Disk	Optical Drive	Graphics	Integrated Communications
845432H/B	Intel Pentium 4 521 2.8GHz, 800MHz FSB, 1MB Cache	Windows XP Home	SiS 661 FX	256MB DDR1	80GB SATA	DVD/CDRW Combo Drive	SiS 661 FX Graphic	Integrated 10/100 Ethernet & 56K Modem
8454E1H/B	Intel Pentium 4 640 3.2GHz, 800MHz FSB, 2MB Cache	Windows XP Home	SiS 661 FX	1GB DDR1	160GB SATA	DVDRW	SiS 661 FX Graphic	Integrated 10/100 Ethernet & 56K Modem

### Display Monitor

Model	Model Type
Lenovo L151 Monitor	9165AB6
Lenovo L171 Monitor	9227AB6

Lenovo recommends Windows® XP.



## Recommended accessories for Lenovo 3000 series Notebooks

### ● Port Replicator

Lenovo USB Port Replicator not only adds expandability by providing USB, network, external display ports, but also carries through "Cable Management" concept, making multiple cable connections easy. Carrying notebook between workplace and home is no longer troublesome.



Lenovo USB Port Replicator with Video  
(40Y8145)



\* optional accessory

### ● Battery

#### Lenovo V100 series

NEW



Lenovo V100 series  
3 Cell Li-Ion battery  
(40Y8319)

NEW

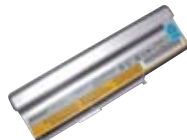


Lenovo V100 series  
6 Cell Li-Ion battery  
(40Y8321)

#### Lenovo N100 series



Lenovo N100 series  
6 Cell standard Li-Ion battery  
(40Y8315)



Lenovo N100 series  
9 Cell standard Li-Ion battery  
(40Y8317)

#### Lenovo C100 series



Lenovo C100 series  
8 Cell Li-Ion battery  
(40Y8313)

### ● Carrying Case



Lenovo Carrying Case  
Messenger  
(40Y8598)



Lenovo Carrying Case  
Top Loader  
(40Y8601)



Lenovo Carrying Case  
BackPak  
(40Y8603)

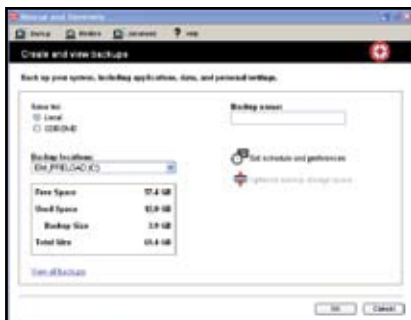
For further information regarding accessories of Lenovo 3000 series Notebooks, please visit Lenovo product website.  
<http://www.lenovo.com/products/hk/>

# Lenovo Care Tools

Lenovo 3000 series notebooks and desktops are equipped with Lenovo Care, integrating 3 main functions – Quick Links, Resource Center Protection and Settings, Message Centre System Support Service, providing a one-stop brand new system management concept. Lenovo Care streamlines system security function settings, searches wireless connection, recovers from a crash with the push of a button, plays various audio-visual or multimedia files, etc., making all operations at ease. Besides, users can gain Lenovo professional online support service for automatic program and software updates, ensuring best performance of the system.

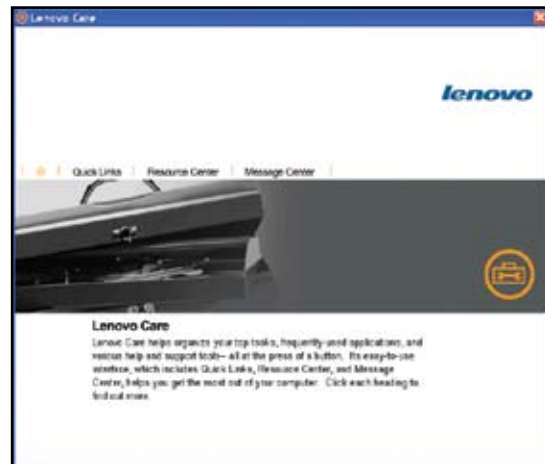
## 1 Touch recovery

The internet is flooded with virus and malicious softwares. Lenovo Care not only filters, clears and identifies software failure caused by virus or malicious software, but also recovers automatically, allowing system to operate normally.



## Easy network connection

Lenovo Care allows users to set network functions, so that they can easily connect to the internet via cable or wireless at home, office, hotels or during business trips with a touch of a button. After getting internet connection, users can use the inclusive Google search engine to look for their desired websites conveniently.



Lenovo N100 Notebook is pre-installed with Lenovo Care Tools, enabling users to operate different functions on one single interface.

## Automatic update

The powerful automatic tools to identify and update Lenovo softwares by itself, replacing human search and important system update. Users can preset schedule to download, install and renew softwares, maintaining the system at its best condition.



## Multimedia entertainment

Users can use the toolbar provided by Lenovo Care to open different media softwares simultaneously, no matter watching movies, listening to music or burning discs. This fulfils their entertainment needs of various media in one-stop.



# World-Class After Sales Service



**1 year Lenovo Protection Service** (for selected models)  
Exclusive coverage (including man-made damage and theft)\*



**2 hours express repair service** (for Hong Kong only)



**3 years international warranty scheme upgrade**  
(at HK\$800 only) (for selected models)



## International Warranty Service

Covering 169 countries worldwide, including:

• Africa • Argentina • Austria • Belgium • Bolivia • Brazil • Brunei • Canada • Chile • China • Colombia • Costa Rica • Croatia • Cyprus • Czech Republic • Denmark • Dominican Republic • El Salvador • Estonia • Finland • France • Germany • Greece • Guatemala • Honduras • Hungary • India • Indonesia • Ireland • Israel • Italy • Japan • Korea • Latvia • Lithuania • Luxembourg • Malaysia • Malta • Mexico • Middle East • Netherlands • New Zealand • Nicaragua • Norway • Panama • Peru • Philippines • Poland • Portugal • Romania • Russian Federation • Singapore • Slovakia • Slovenia • Spain • Sri Lanka • Sweden • Switzerland • Taiwan • Thailand • Turkey • United Kingdom • United States • Uruguay • Venezuela • Vietnam

## China Warranty Service

Covering 31 provinces and 200 cities, including:

• Beijing • Shijiazhuang • Zhengzhou • Huhehaote • Jinan • Qingdao • Taiyuan • Tianjin • Guiyang • Chengdu • Chongqing • Kunming • Fuzhou • Xiamen • Guangzhou • Shenzhen • Nanning • Shanghai • Hefei • Nanjing • Suzhou • Zhuhai • Hangzhou • Haerbin • Changchun • Dalian • Shenyang • Wuhan • Changsha • Nanchang • Lanzhou • Yinchuan • Xining • Xian • Urumqi • Lhasa • Daqing • Ningbo • Luoyang • Yantai • Zibo • Datong • Panzhihua • Xichang • Quanzhou • Maoming • Shantou • Shaoguan • Zhangjiang • Zhaoqing • LiuZhou • Haikou • Kunshan • Nantong • Wuxi • Xuzhou • Jinhua • Wenzhou • Yiwu • Jiamusi • Mudanjiang • Qiqihaer • Dandong • Jinzhou • Xiangfan • Huaihua • Ankang • Zhuzhou • Tanggu • Linfen • Hulunbeier • Tongliao • Jilin • Tumen • Tunghua • Weifang • Kaiyuan • Benbu • Changzhou • Nanping • Rongan

### \* Lenovo Protection Service

Lenovo Protection Service provides service coverage against theft and accidental damage in addition to the international warranty. This will cover the expense of repair or replacement of the insured machines with minimal deductibles. Lenovo Protection Service is subjected to terms and conditions, for further information please visit <http://www.lenovo.com/hk/protection>

Please contact us immediately to enjoy supreme benefits:  
800-938-838 | [www.lenovo.com/3000/hk](http://www.lenovo.com/3000/hk)

**lenovo**™